



Range Condition



Range condition

“Incorporating caribou conservation and recovery in land use planning requires consideration of caribou at the landscape scale, and an understanding of the point at which human disturbance has a significant impact on caribou (“thresholds of human disturbance”).”

(MNR 2009. CCP, P.6)

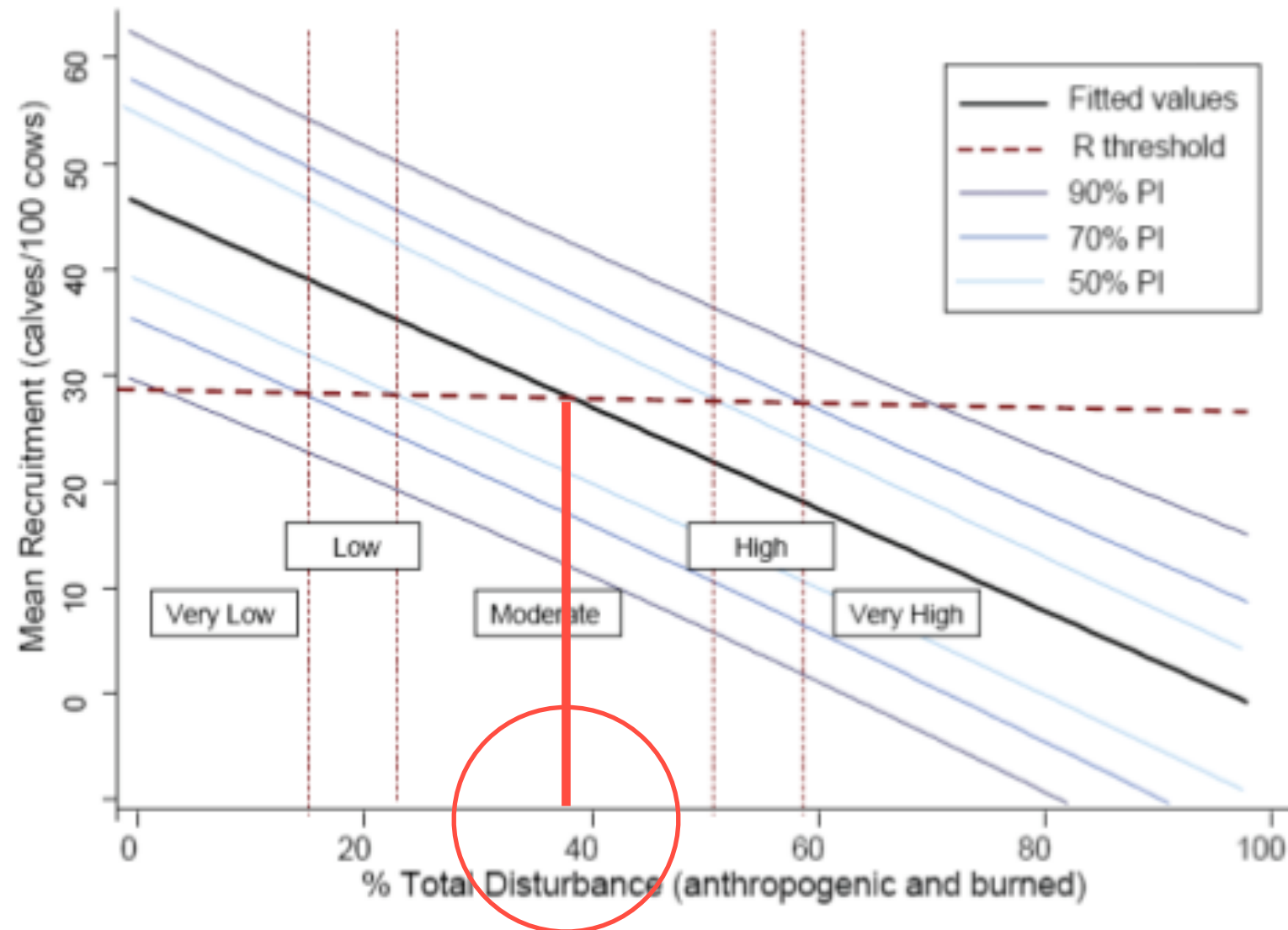


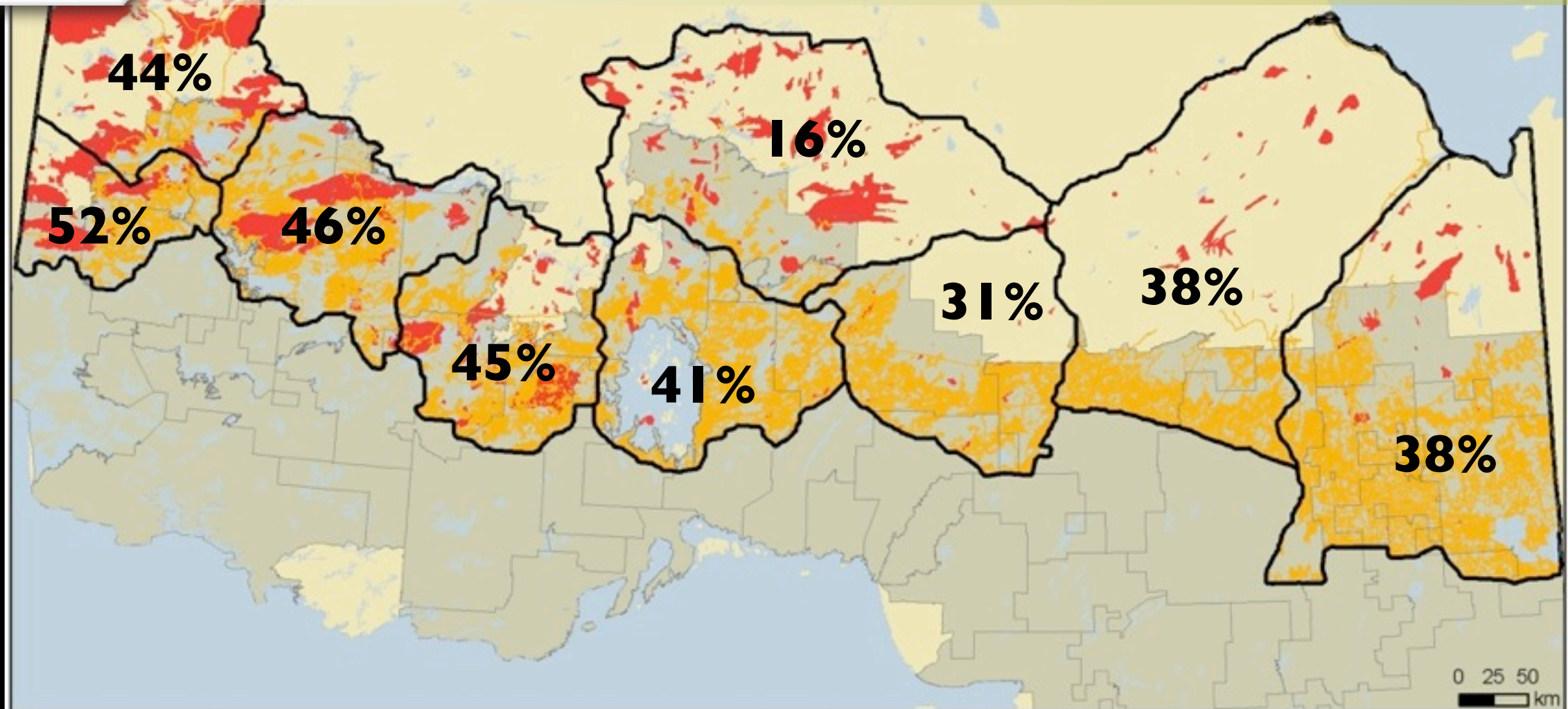
Figure 8. Disturbance states derived from the prediction intervals (PI) for the relationship between total range disturbance and boreal caribou recruitment, based on a recruitment threshold of 28.9 calves/100 cows (15% calves in total population).

Scientific Review for the Identification of Critical Habitat for Boreal Caribou, 2009

R threshold: 28.9 calves/100cows
disturbance intersection ~38% disturbance



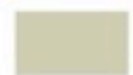
Original findings



Fire Disturbance



Anthropogenic Disturbance



Area of Undertaking (AOU)



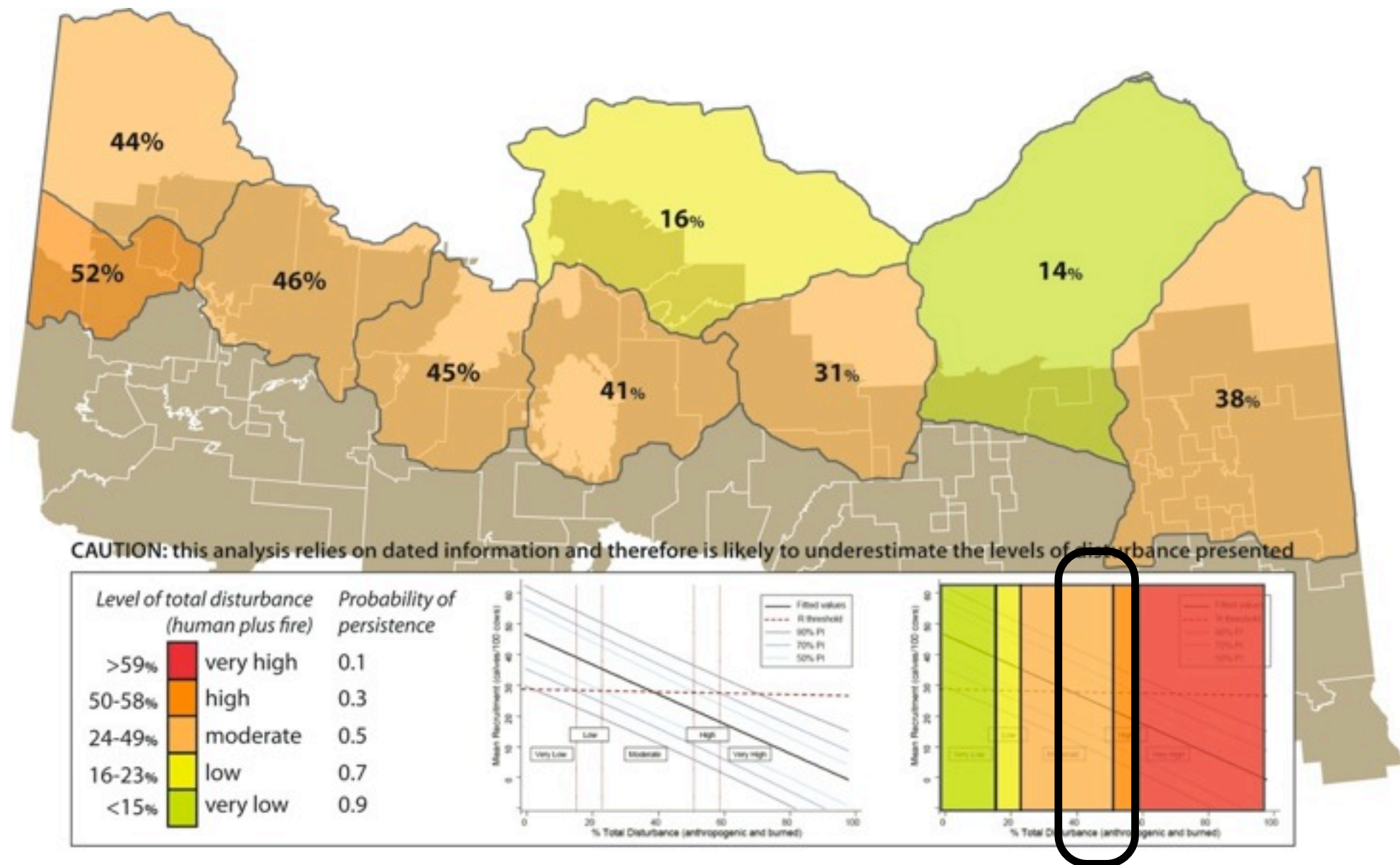
Population Range Boundaries



Forest Management Unit Boundaries

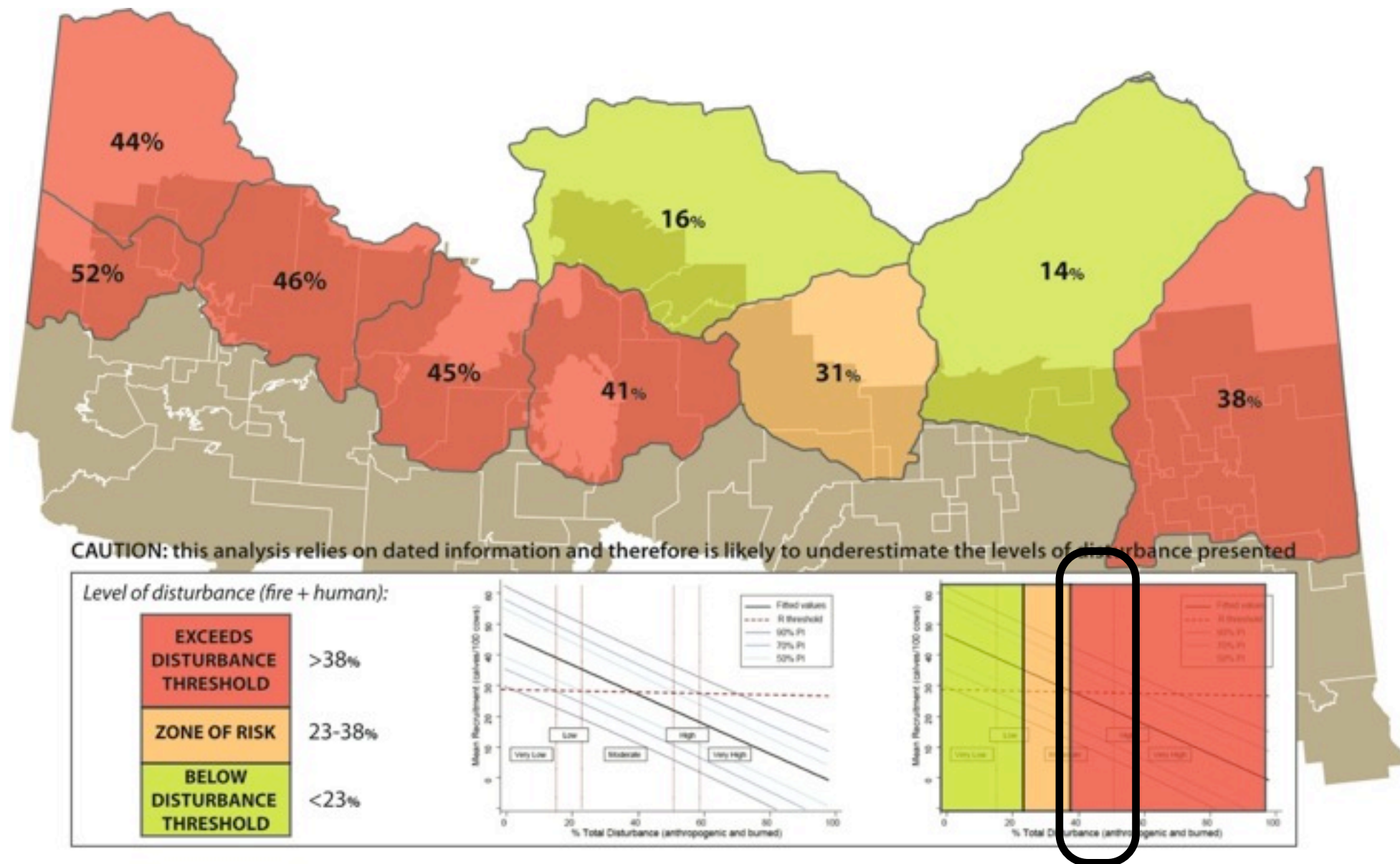
Data Sources: Fire Disturbance, Land Information Ontario, 2009; Recent Forest Harvest (1997-2008), Forest Resource Inventory, OGDE, 2009; Linear Features, MNR Road Segment, LIO 2009; Woodland Caribou Population Range Boundaries, Draft Ontario Woodland Caribou Conservation Plan, 2009; LIO was accessed through the Ontario Geospatial Data Exchange.

MAP #5



total disturbance / probability of persistence - BEST data

MAP #6



simple range condition scale - BEST data



Range condition

Best regional data makes a difference

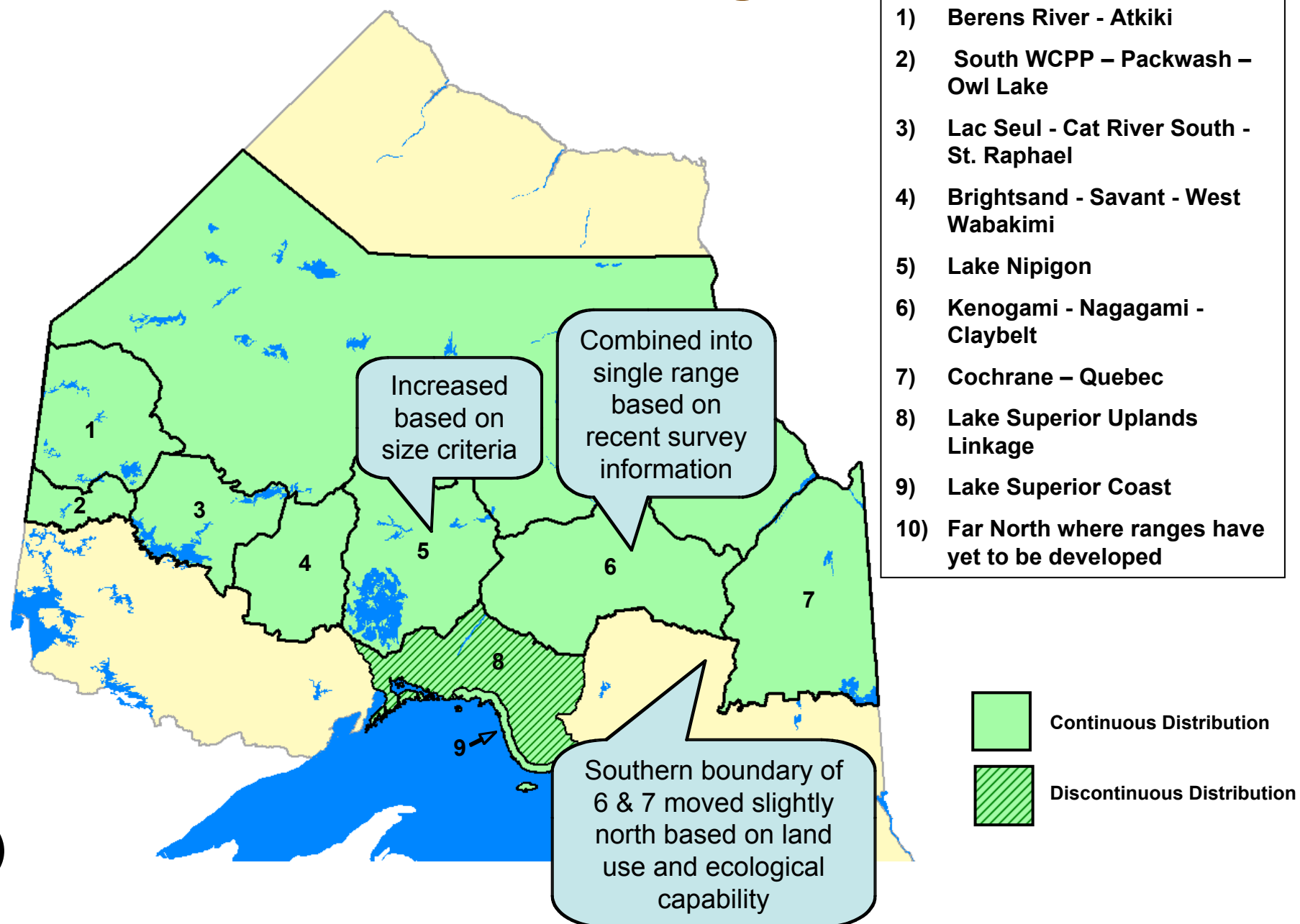
Data lags - disturbance is generally under-represented

Useful snapshot, particularly while awaiting better population information



Latest range bounds

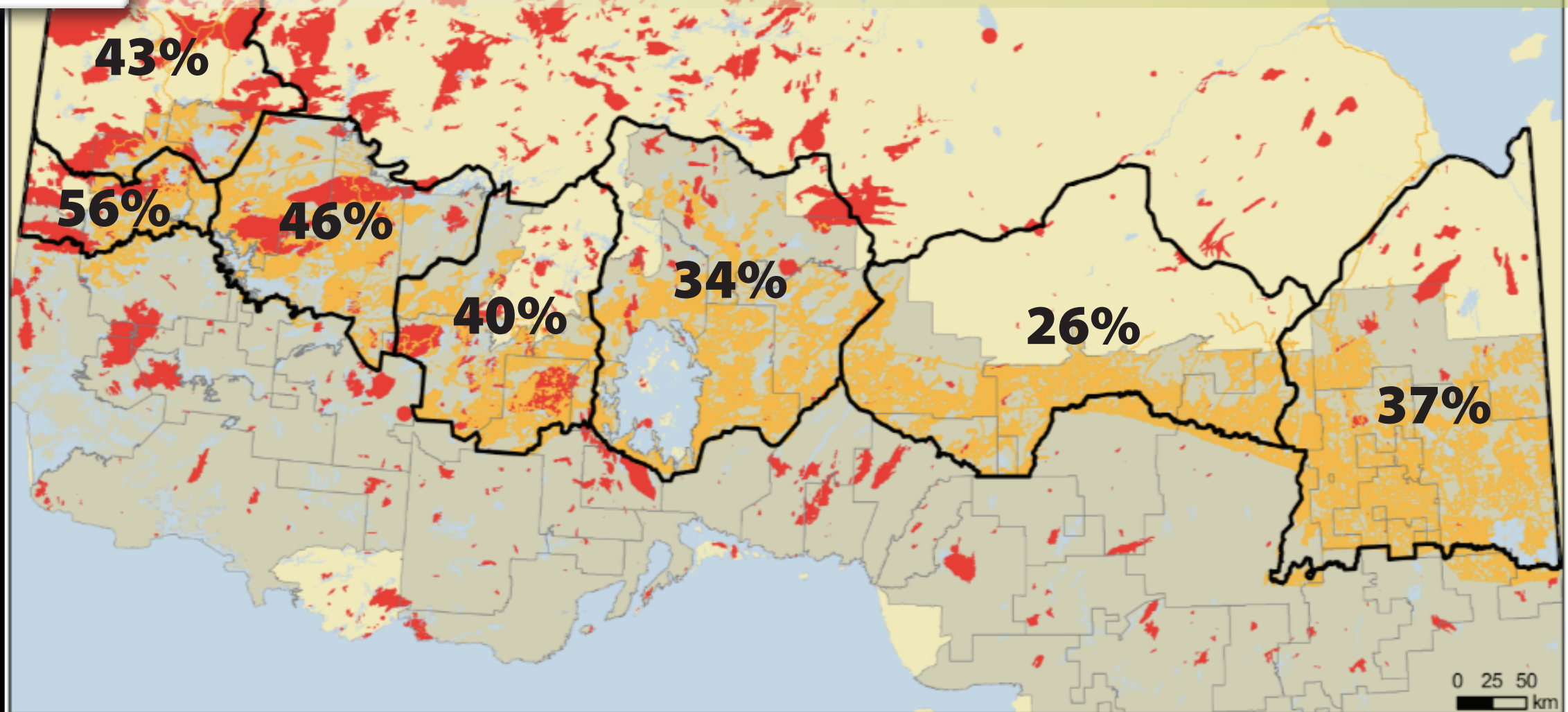
Local Population Ranges



(MNR, 2010)



Latest range bounds



Fire Disturbance



Anthropogenic Disturbance



Area of Undertaking (AOU)



Population Range Boundaries



Forest Management Unit Boundaries

Data Sources: Fire Disturbance, Land Information Ontario, 2009; Recent Forest Harvest (1997-2008), Forest Resource Inventory, OGDE, 2009; Linear Features, MNR Road Segment, LIO 2009; Woodland Caribou Population Range Boundaries, OMNR 2010.