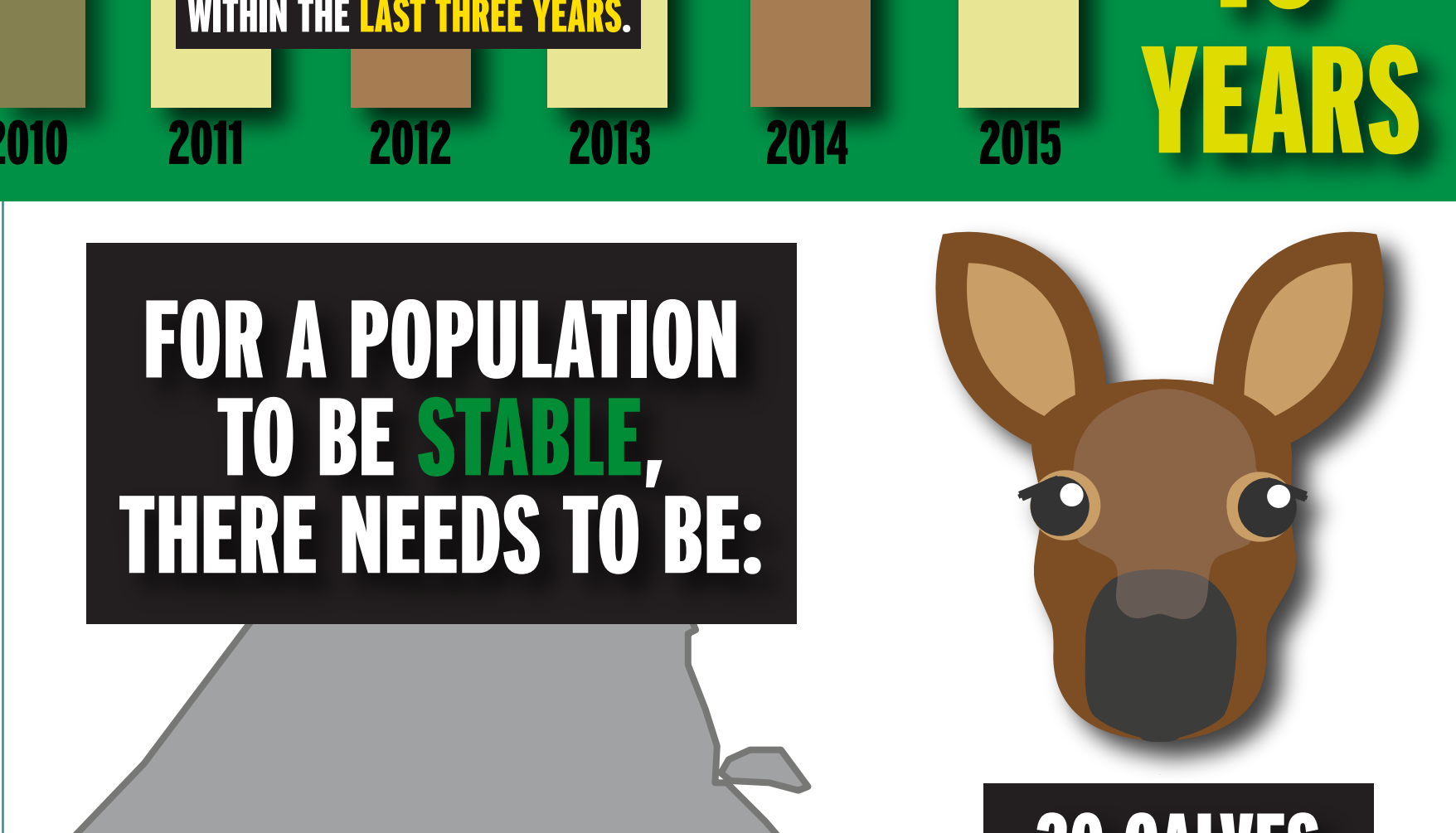


# WILL ONTARIO'S MOOSE SINK OR SWIM?

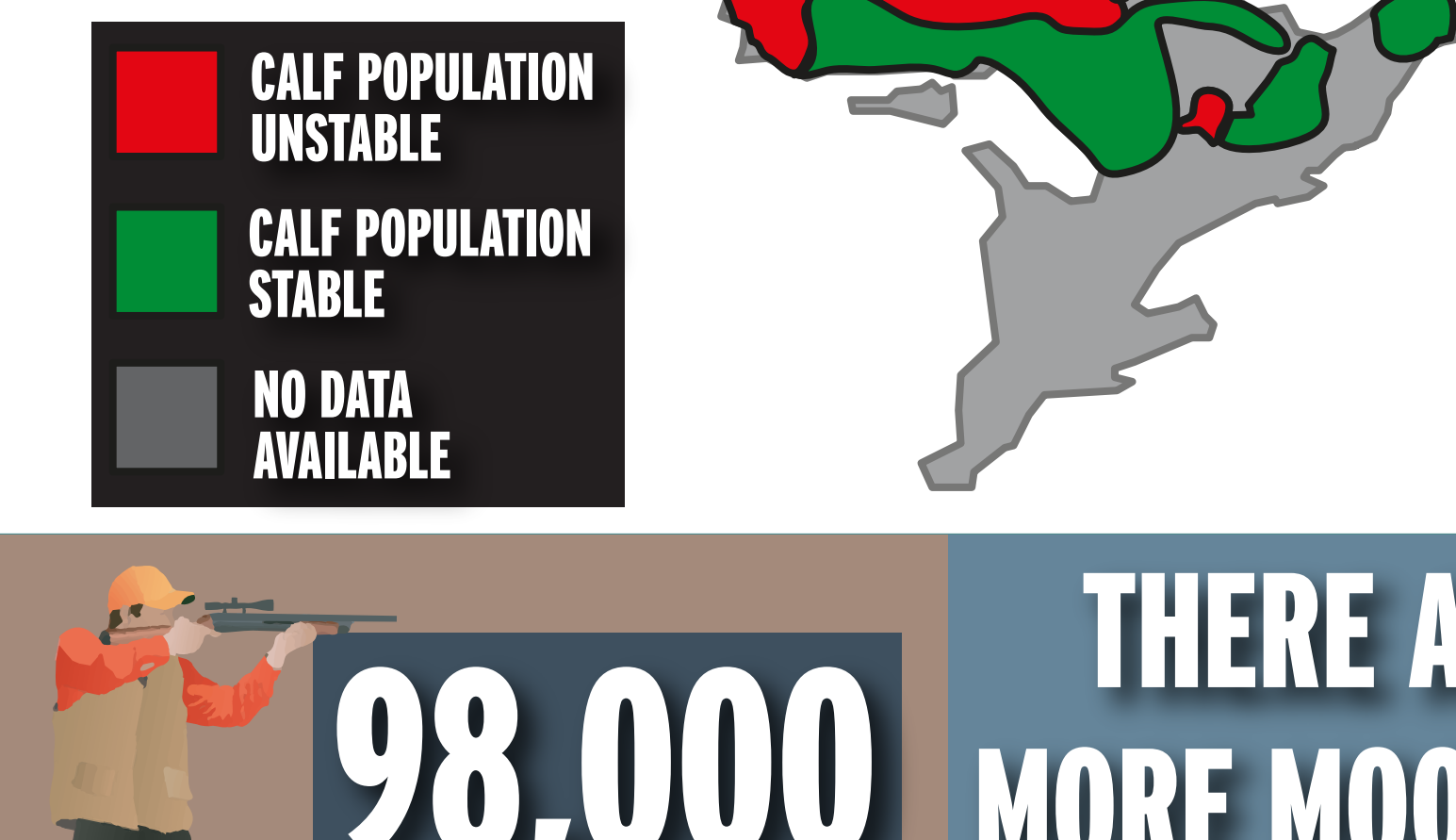
WILDLANDS LEAGUE  
A chapter of the Canadian Parks and Wilderness Society

## MOOSE POPULATION TREND



FOR A POPULATION TO BE **STABLE**, THERE NEEDS TO BE:

**30 CALVES PER 100 MOOSE COWS**



**98,000**  
LICENSED HUNTERS

VS

**92,300**  
ESTIMATED MOOSE

**THERE ARE MORE MOOSE HUNTERS IN ONTARIO THAN MOOSE**

"IN 2015, ALMOST 80,000 HUNTERS WHO FAILED TO GET AN ADULT MOOSE TAG WERE STILL ELIGIBLE TO HUNT A CALF." - 2016 ECO REPORT

**SHARP DECLINES IN THE MOOSE POPULATION HAVE RESULTED IN AN END TO THE HUNTING SEASON IN 13 OUT OF 36 AREAS.**



**SO WE KNOW THAT OUR MOOSE ARE IN TROUBLE BUT WHO OR WHAT IS RESPONSIBLE?**

CLIMATE CHANGE

COMPETITION

PARASITES

HUNTING

DISEASE

PREDATORS

ACCIDENTS

HABITAT LOSS & DISTURBANCE



**ONTARIO HAS AN EXTENSIVE ROAD NETWORK**

**BUT OTHER FACTORS ARE NOT NATURAL.**

DISTURBANCE CAUSED BY ROAD BUILDING DEGRADES MOOSE HABITAT AND INCREASES THE SUCCESS OF PREDATORS AND HUNTERS PUTTING FURTHER PRESSURE ON THE POPULATION.

**DID YOU KNOW?**

A 1997 STUDY IN NORTHWEST ONTARIO REVEALED THAT 'LANDSCAPE DISTURBANCE' AND 'HUNTER ACCESS' IN COMBINATION CAUSED THE LOCAL MOOSE POPULATION TO DECLINE.

WITHOUT COVER AND REFUGE HABITAT, MOOSE ARE MORE VULNERABLE TO SUCCEEDING TO ONE OF THE MANY CHALLENGES THEY FACE.



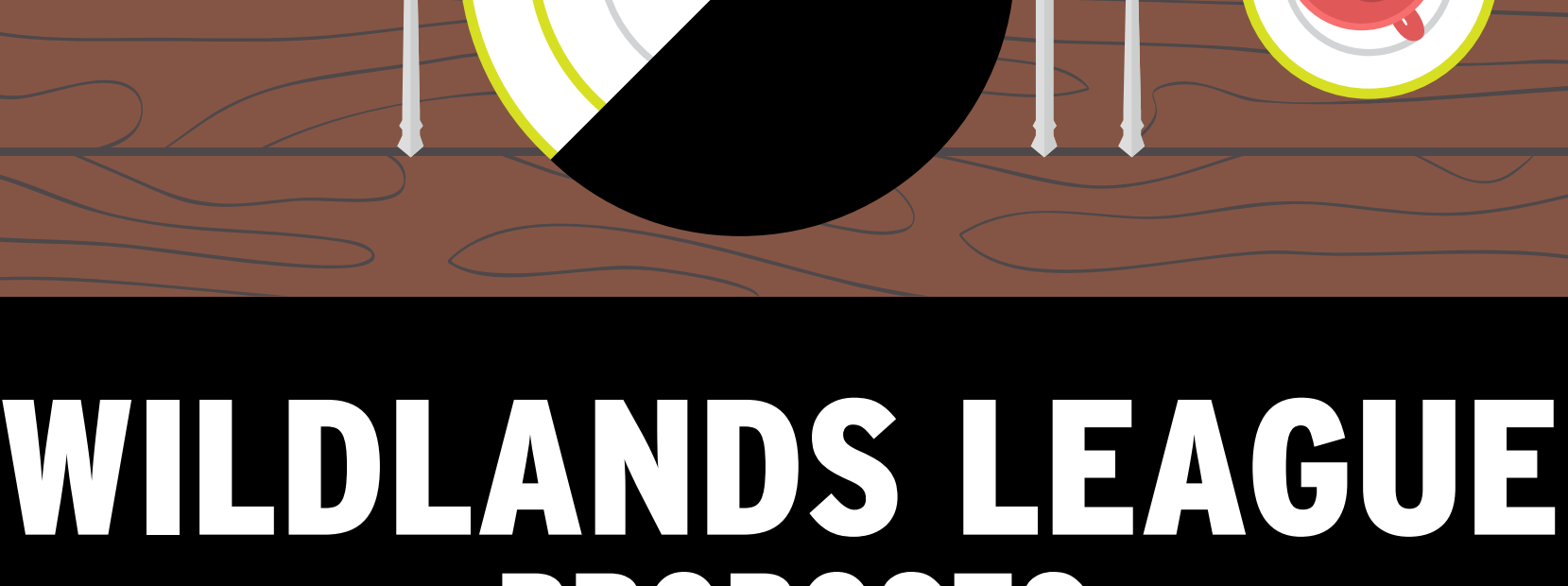
**TODAY'S HUNTERS ARE MORE SUCCESSFUL THAN EVER. MANY TAKE ADVANTAGE OF MODERN TECHNOLOGY SUCH AS DRONES AND ATVs THAT MAKE FOREST ACCESS MORE EXTENSIVE.**

**DECLINES WILL HAVE SERIOUS SOCIAL, ECONOMIC AND ENVIRONMENTAL CONSEQUENCES.**



REMOTE COMMUNITIES IN THE FAR NORTH RELY ON WILD MEATS LIKE MOOSE THAT CONTRIBUTE A MONETARY VALUE EQUIVALENT TO ONE THIRD OF THEIR TOTAL CASH ECONOMY.

**FOOD**  
SECURITY OF NORTHERN ONTARIO RELIES ON FOREST SOURCES OF MEAT.



## WILDLANDS LEAGUE PROPOSES:



**1 Create Moose Refuge Areas, with limited access**

Increasing road density can lead to local population declines due to increases in predator and hunter access.



**2 End the calf hunt.**

Ontario allows calf hunting. Recent studies have shown that calf hunting can have more negative impacts on the population than previously thought.



**3 More enforcement, monitoring and research**

It is estimated that we need 3-4 times more conservation officers to detect all illegally killed moose in Ontario.