



# Towards solutions for meaningful caribou conservation in Ontario

May 18, 2016

By Anna Baggio, Trevor Hesselink and Dave Pearce  
16<sup>th</sup> North American Caribou Workshop, Thunder Bay

# Positive Aspects of Ontario's Approach



- Range assessments released (although pop'n condition data is dated)
- Far North Ranges delineated
- General Habitat Description
- Disturbance footprint mapping
- Pop'n trend is primary line of evidence influencing determination of range condition

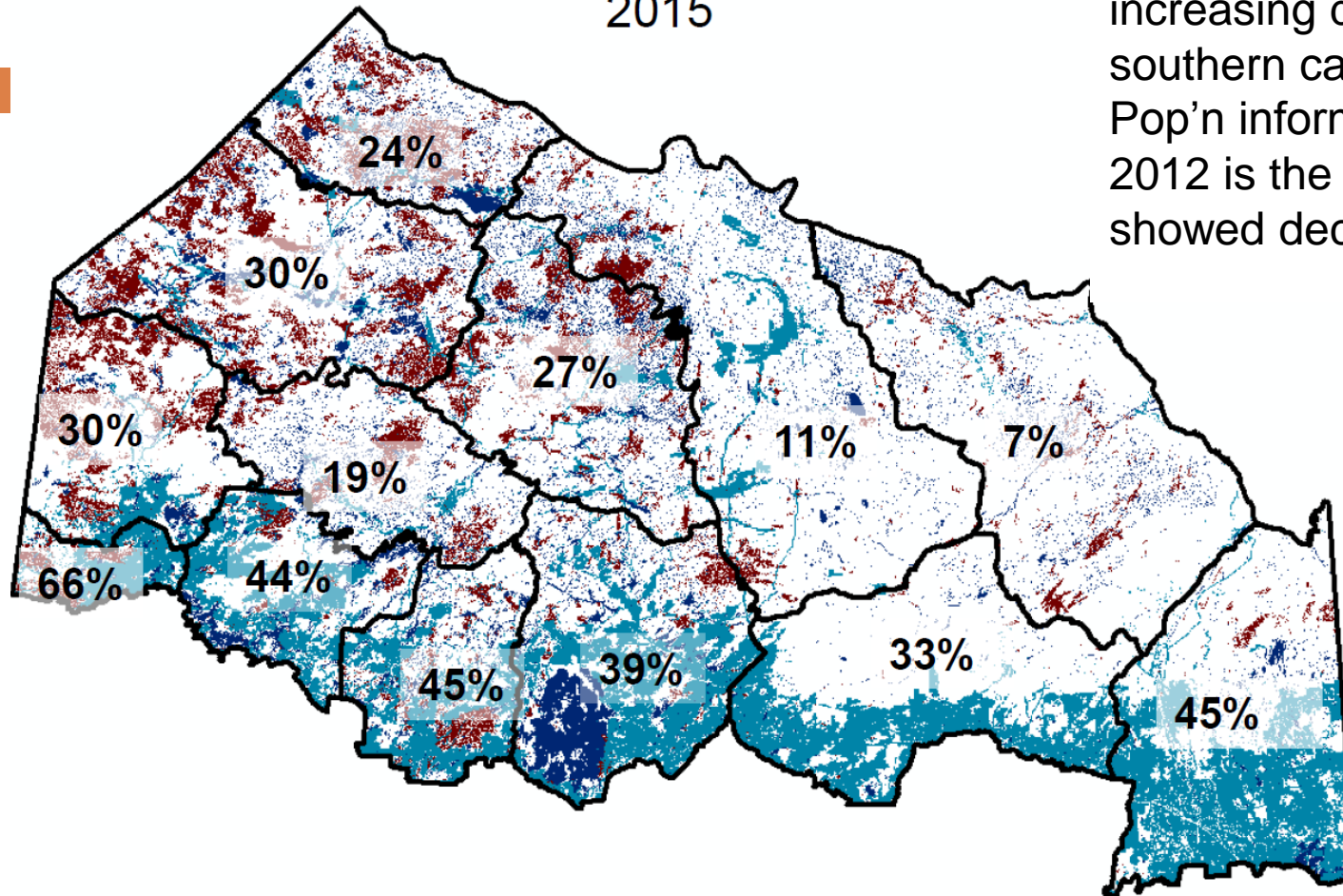
# But overall situation is bleak



- Since 2008, the Province has failed to bring in protections for caribou consistent with original intentions of ESA;
- Implementation on range management by Ontario has been slow and we've seen little to no difference in how industrial activities are being approved;
- In 2013, Ontario made a regulation creating **wide ranging exemptions** for **most industrial activities** in Ontario depriving each threatened and endangered species (incl. boreal caribou) of statutory protections against killing them and destroying their habitat.



2015

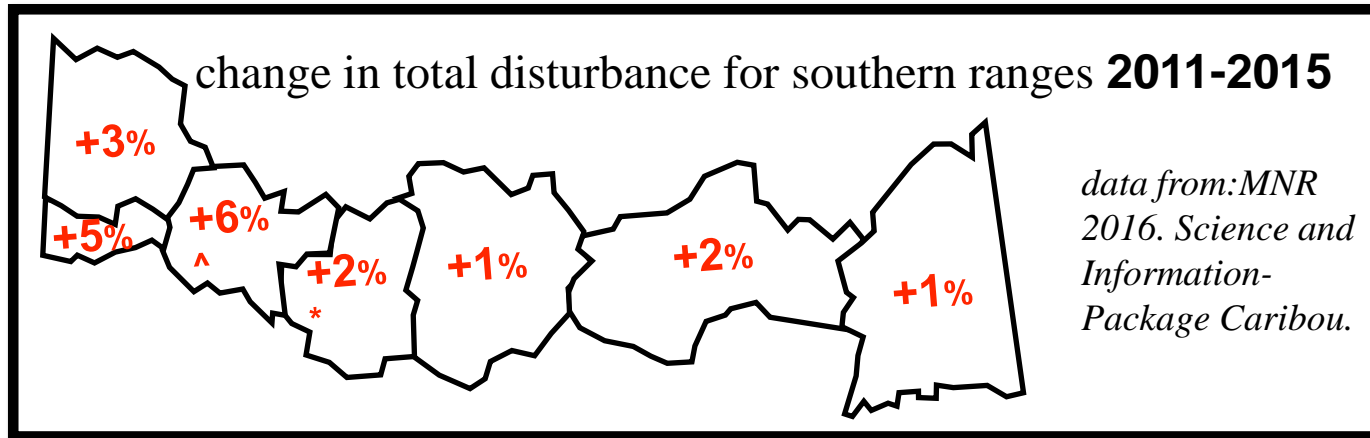


And latest disturbance information shows increasing disturbances in southern caribou ranges. Pop'n information (2011-2012 is the most recent) showed declining trend;

\* Buffered 500 metres.

Statistics are approximate and may contain estimates from forest management planning annual work schedules.

Southern ranges continue to be eroded...disturbance trends not good.



\*Brightsand Range: +76,957 ha anthro only

^Churchill Range: +100,238 ha of anthro only

Available online at:

<http://www.olt.tbaytelldirectit.com/Science%20and%20Information%20-%20Package%20Caribou.pdf>

Projects can be assessed for their range impacts. This can inform decision-making and be consistent with original intention of the Endangered Species Act and with federal recovery strategy.

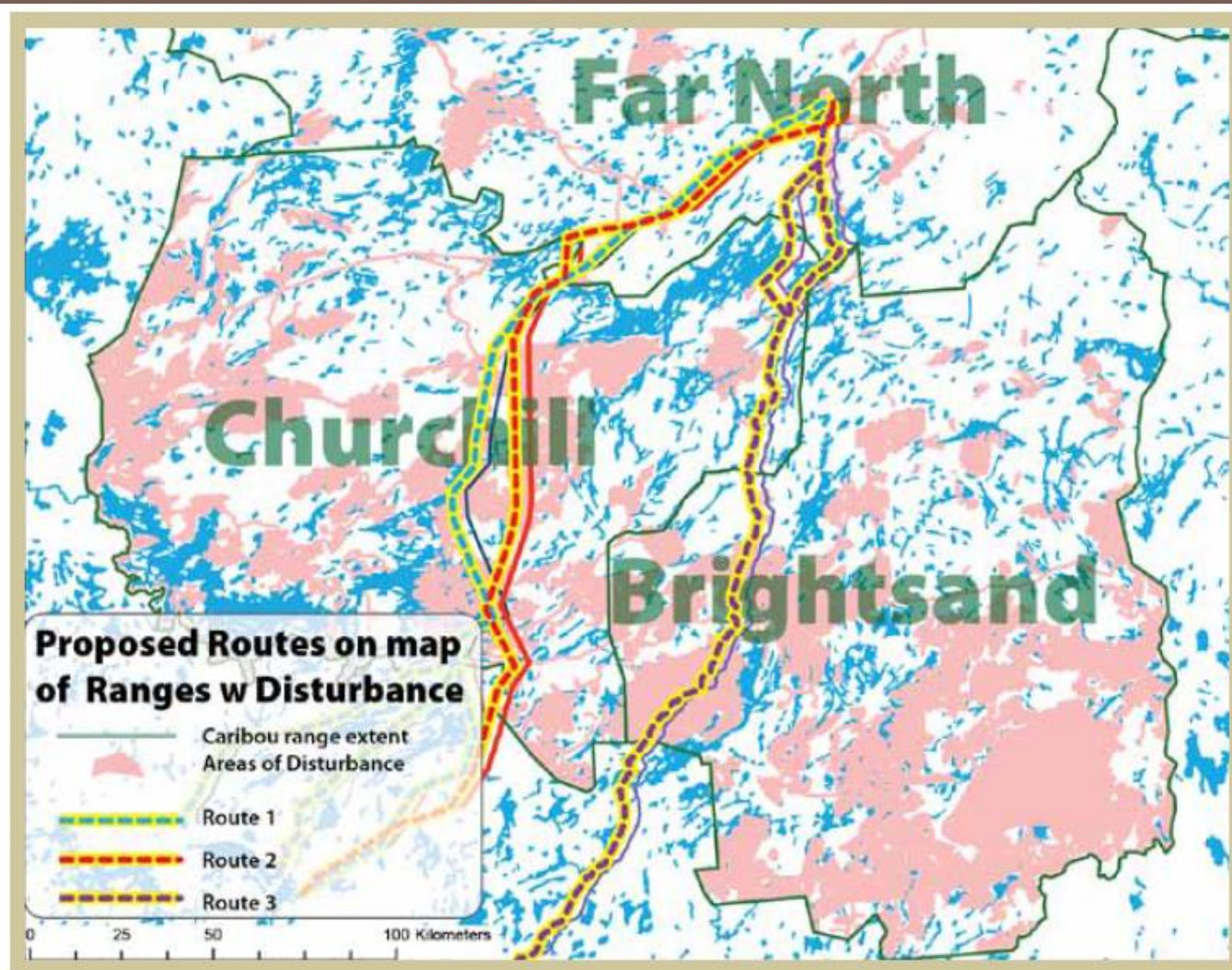
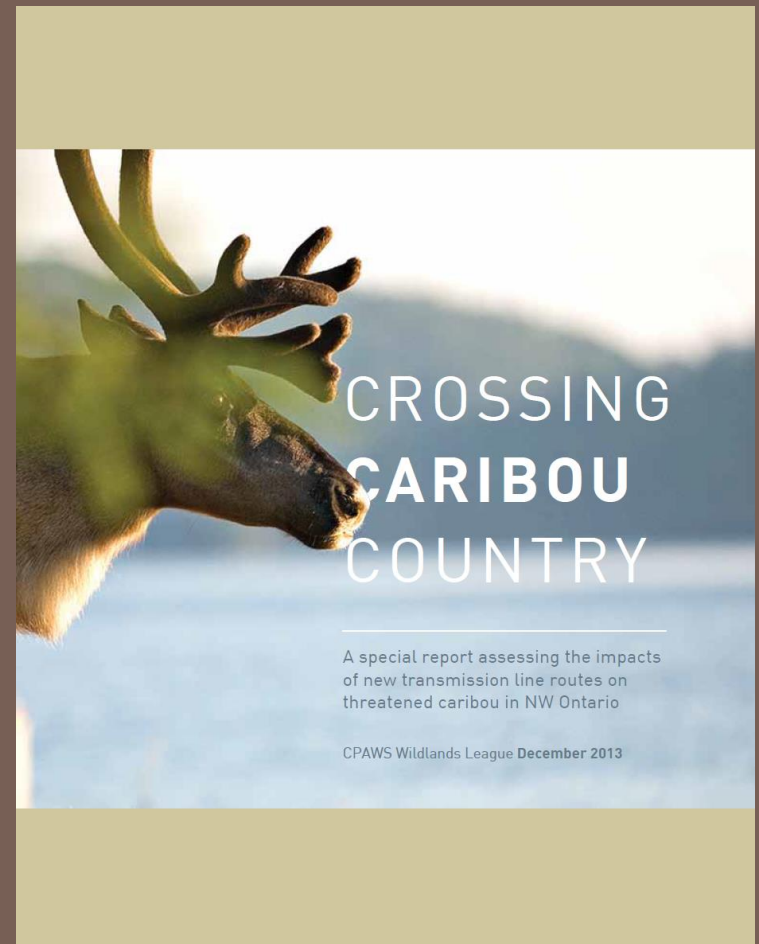


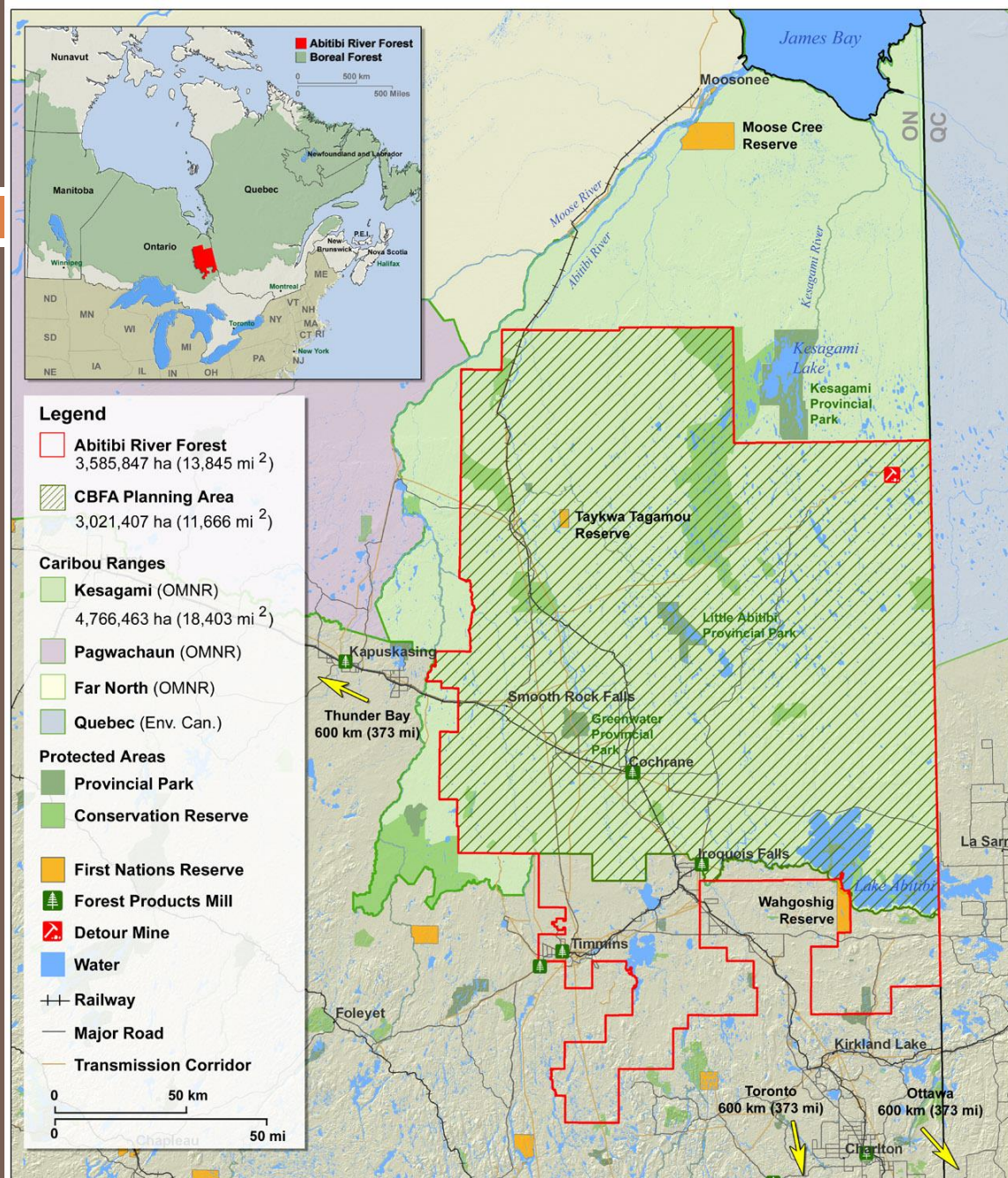
Figure 3 summarizes the results of the routing options from the perspective of their cumulative disturbance contributions to the three affected caribou ranges. The pink areas represent disturbance (fire and anthropogenic disturbance).



# Crossing Caribou Country

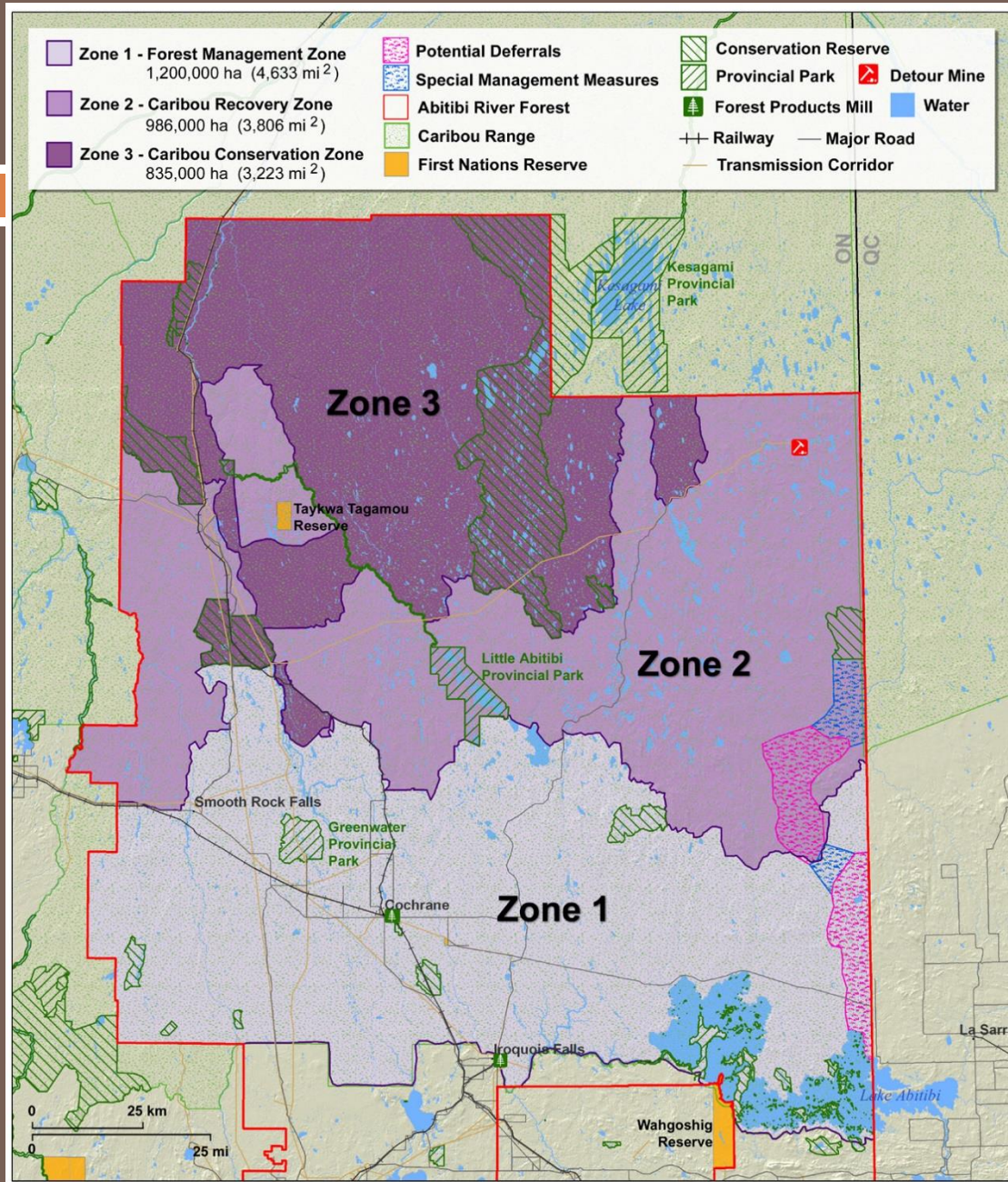
- No additional permanent infrastructure should be introduced in the highly disturbed southern ranges (Churchill and Brightsand) and a focus on restoration is required;
- Any additional linear infrastructure is likely to result in some impacts to caribou, and probably at multiple scales. If transmission infrastructure must be installed, generally avoiding further bisection of intact habitat would be the primary tool for minimizing these impacts;





- With proactive industry partners you can bring down disturbance. We did it in the Kesagami Range.
- We reached out to First Nations and Mayors to come up with a joint solution.





- Our plan reduces cumulative disturbance at the range level and avoids cuts in the intact. It also increases wood supply over status quo.



Thank You.

Please join us today from 5:30 to 7pm after you've perused the posters. Tembec and CPAWS will be in the **Ontario Room at the Victoria Inn** showcasing our joint solutions in Ontario and Quebec.