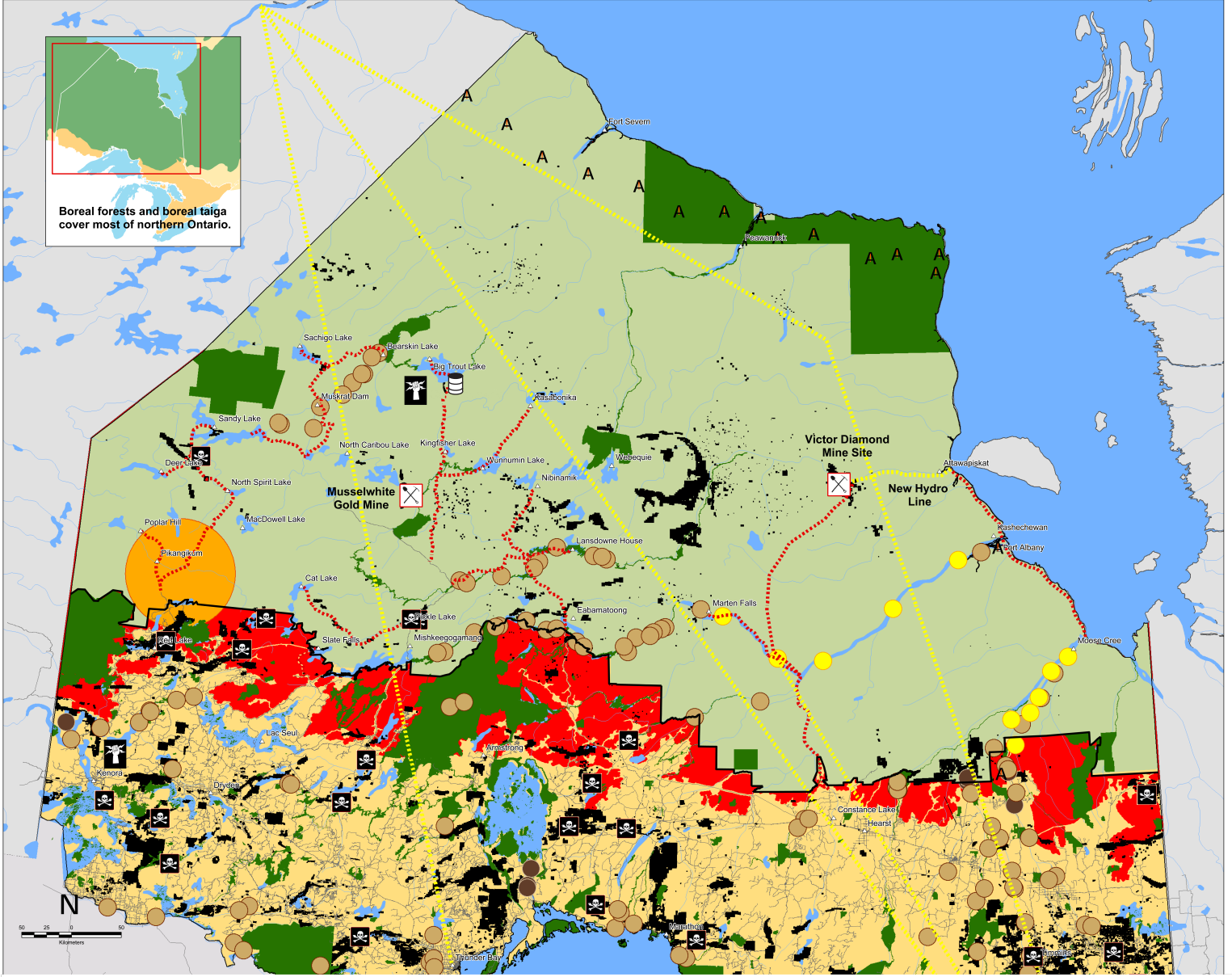


# The Great Boreal Forest is Under Threat



This map is for illustrative purposes only.

Ontario's Great Boreal Forest is under threat. New mines, forestry allocations, hydro developments and roads are being proposed. A wild west frontier approach persists north of the 51st parallel in Ontario where the interests of industry dominate. If this continues, this will result in the carving up of forests and more conflict and resource uncertainty. The solution is to create rules for development before allowing any new industrial activity and to resolve outstanding land claims.

This map was created by CPAWS Wildlands League based on current (fall 2007) information about proposed developments as found in various government and consultants' studies. CPAWS Wildlands League is not opposed to development or roads per se, however, rules for development must be in place first. This means that comprehensive, conservation land use planning must occur before development so that all the values of the forest - including forests that are essential to communities' cultural identity, habitat for caribou and other wildlife, clean waters, remoteness and sustainable economic opportunities - are considered and protected first.

